

BMP024 - 2.5 Tonne Extension Jib

www.bremco.com.au



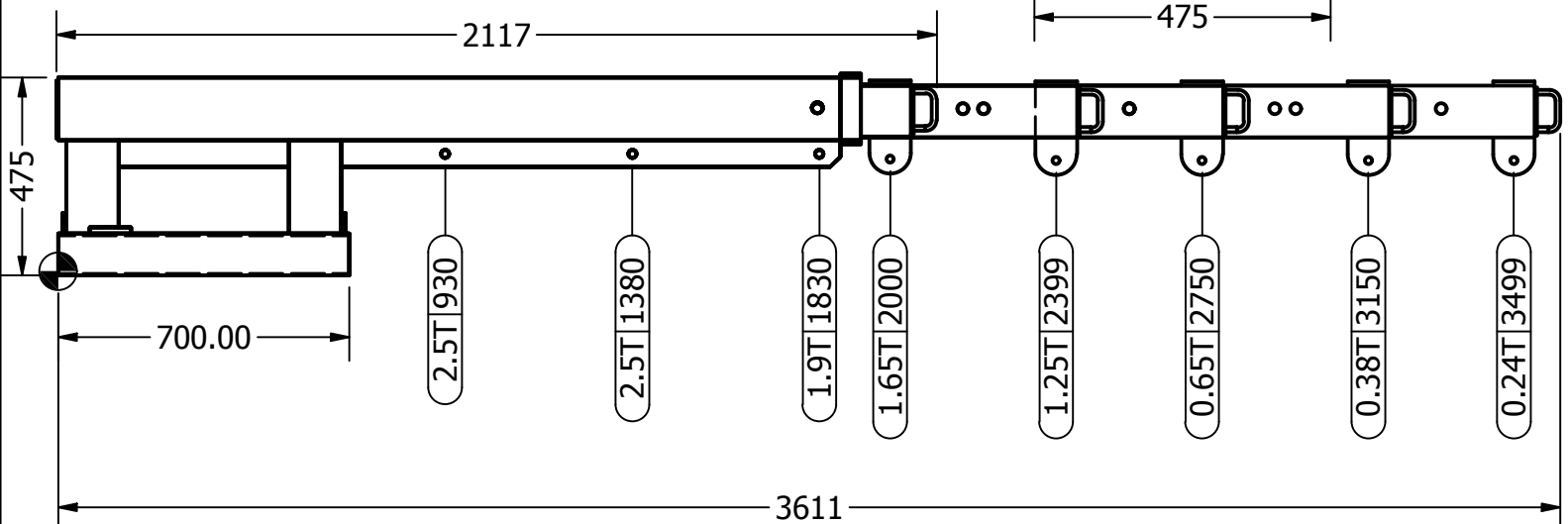
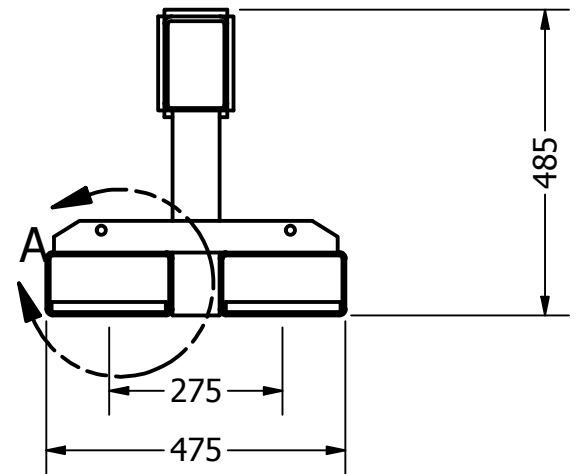
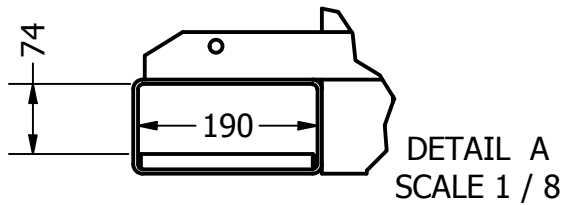
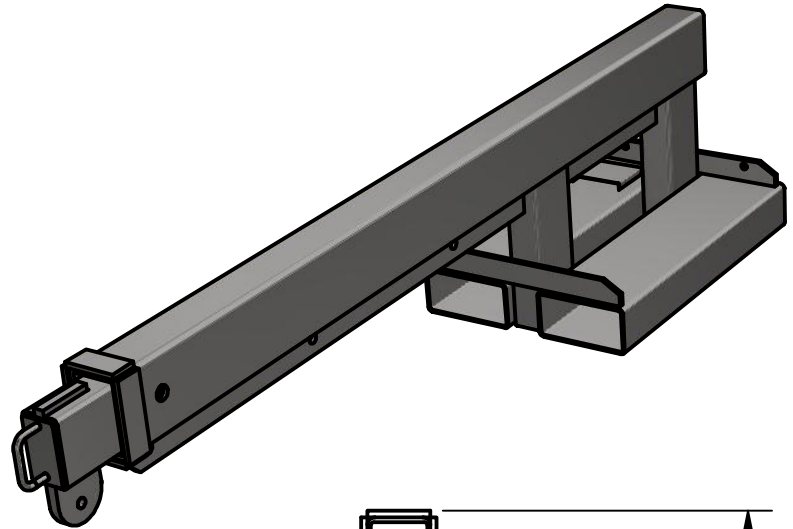
Product Description

Lift and place with accuracy with Bremco's Long Extension Jib.

Designed for the transportation of long loads, which can be slung at greater centres than with a fixed jib due to the manual extension.

Specifications

- WLL: 2500kg at 930mm HLC
- WLL: 240Kg at 3499mm
- Tyne Pockets: 190mm x 74mm
- Tyne Pocket Centres: 275mm
- Finish: Powder Coat
- NB: Compliance plate attached
- Unit comes standard with Hook, Shackles & Pins



FINISH: P/C

WLL: 2.5T

HCoG: 842

VCoG: 296

TARE: 152.025 kg

STANDARDS: AS2359

NOTES:

SPECIFICATIONS SUBJECT TO CHANGE WITHOUT NOTICE

This document is the property of Bremco Metal Products P/L. It must not be copied or reproduced without the written consent of the company.

BREMCO METAL PRODUCTS

BMP024

DRAWING #:

024-SPEC

SHEET #:

1 of 1

DATE #:

22/02/2019

REVISION:

A