

# 10 Tonne Heavy Duty Forklift Extension Jib

Product Code: BMP025

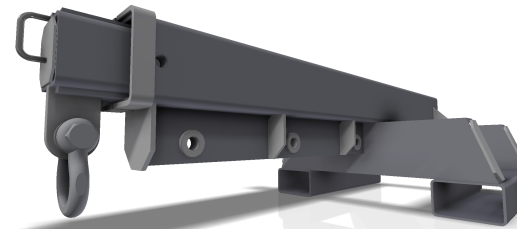
## Convert your forklift for some intense lifting.

Designed for the heavier range of forklift for handling large unpalletised loads, this extension jib has the added flexibility of a multi-adjustable extension.

Unit comes standard with hook, shackles and pins.

We can also custom fabricate a forklift extension jib for your specific requirements. Read more about how we can work with you to develop the ideal custom steel fabrication solution for your warehouse.

Keep your workplace safe and operating effectively with Bremco forklift attachments.



## Specifications

- WLL: 10,000kg @ 920mm
- HLC: 960kg @ 3588mm
- Tyne Pockets: 232mm x 116mm
- Tyne Pocket Centres: 875mm
- Finish: powder coated grey

*NB: Complies with AS2359.1. Compliance plate and serial number attached.*

*For complete engineering specifications please refer to specifications sheet on our website.*

**Contact our friendly team today on 1300 273 626 for a quote or to place an order.**

### Bremco Metal Products

Phone 1300 273 626 Fax: (07) 3216 7909

59 Railway Parade, Rocklea QLD 4106

PO Box 94, Salisbury QLD 4107

[www.bremco.com.au](http://www.bremco.com.au)

<b>Product</b>	BMP025
<b>Length</b>	2196mm
<b>Width</b>	1125mm
<b>Height</b>	600mm
<b>Weight</b>	505kg



All Bremco Products are manufactured in Australia.