

BMP093 - SHORT EXTENSION JIBwww.bremco.com.au

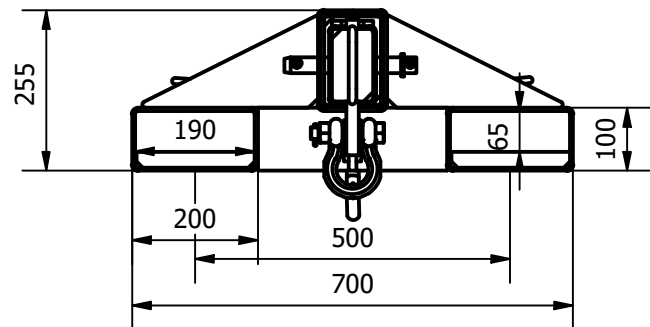
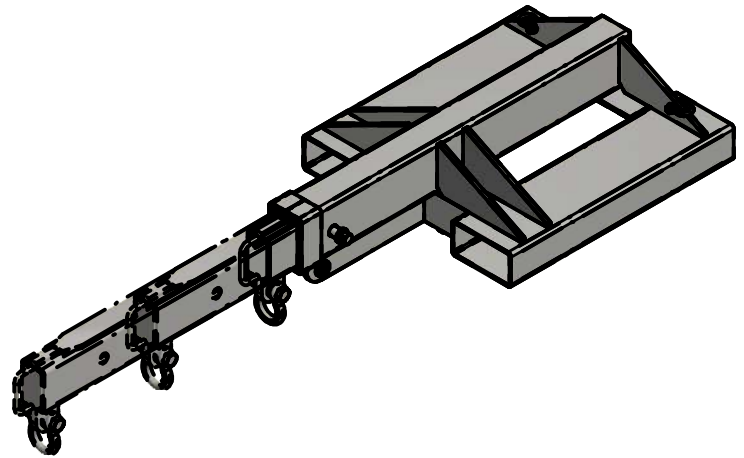

1300 273 626

Product Description

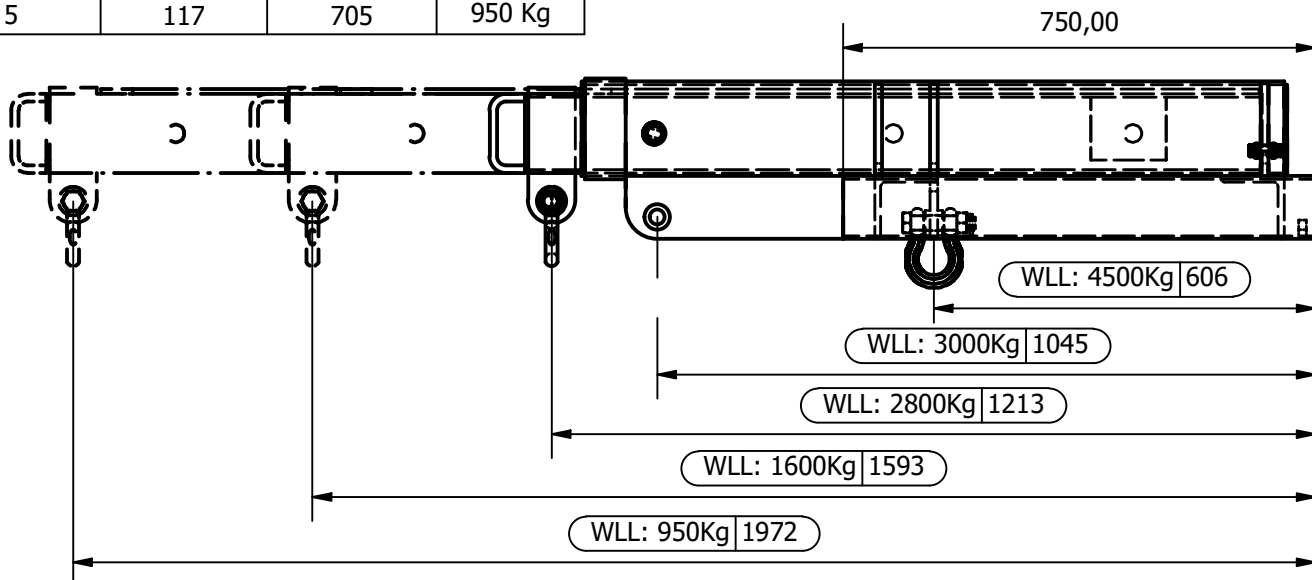
Lift and place with accuracy with Bremco's Short Extension Jib.
Designed for the transportation of long loads, which can be slung at greater centres than with a fixed jib due to the manual extension.

Specifications

- WLL: 3000kg at 1045mm HLC
- HLC: 600mm
- Lost Load: 0mm
- Tyne Pockets: 190mm x 65mm
- Tyne Pocket Centres: 500mm
- Finish: Powder-coat safety yellow
- NB: Compliance plate attached
- Unit comes standard with Hook, Shackles & Pins



BMP093			
POSITION	VCoG	HCoG	WLL
1	117	538	4500 Kg
2	117	538	3000 Kg
3	117	538	2800 Kg
4	117	622	1600 Kg
5	117	705	950 Kg



FINISH: Powder-Coat

WLL: AS SHOWN

HCoG: VCoG:

TARE: 108.852 kg

STANDARDS:

NOTES:

SPECIFICATIONS SUBJECT TO CHANGE
WITHOUT NOTICE

This document is the property of
Bremco Metal Products P/L.
It must not be copied or
reproduced
without the written consent of the
company.

BREMCO METAL PRODUCTS**BMP093-SHORT EXTENSION JIB**DRAWING #:
093 SPECSHEET #:
1 of 1DATE :
4/08/2017REVISION :
B